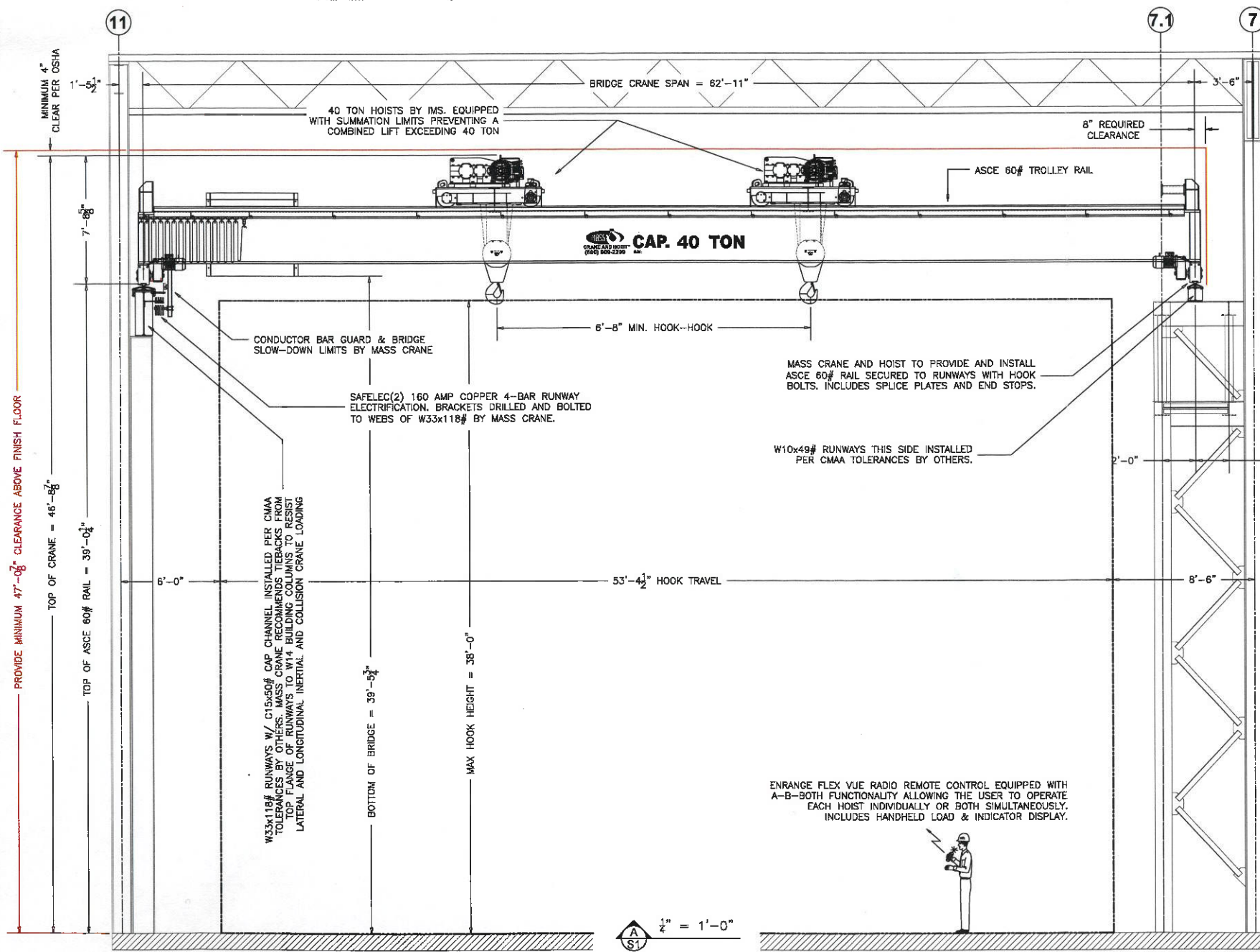
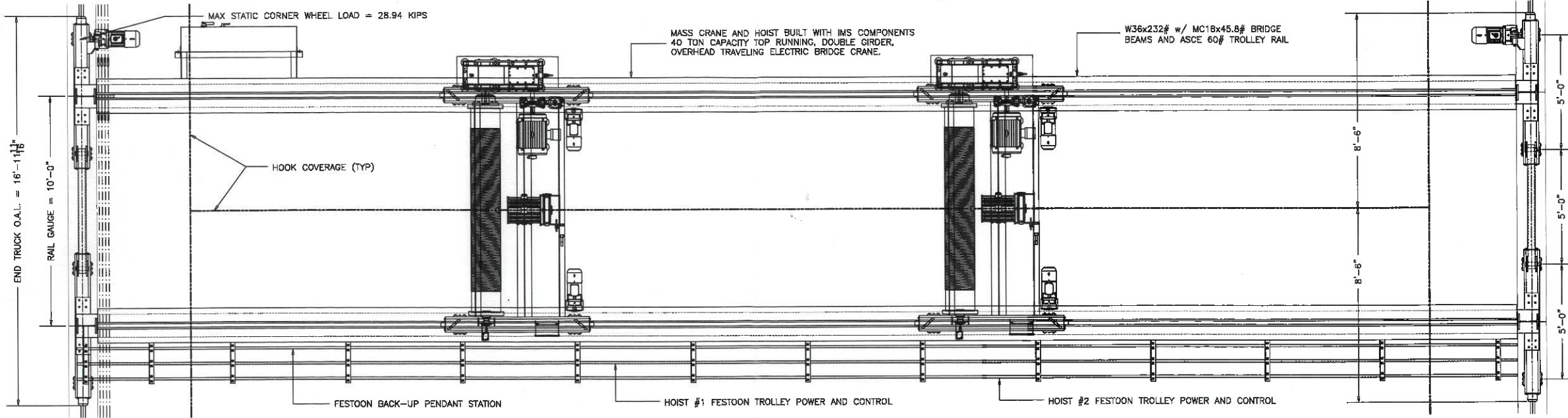
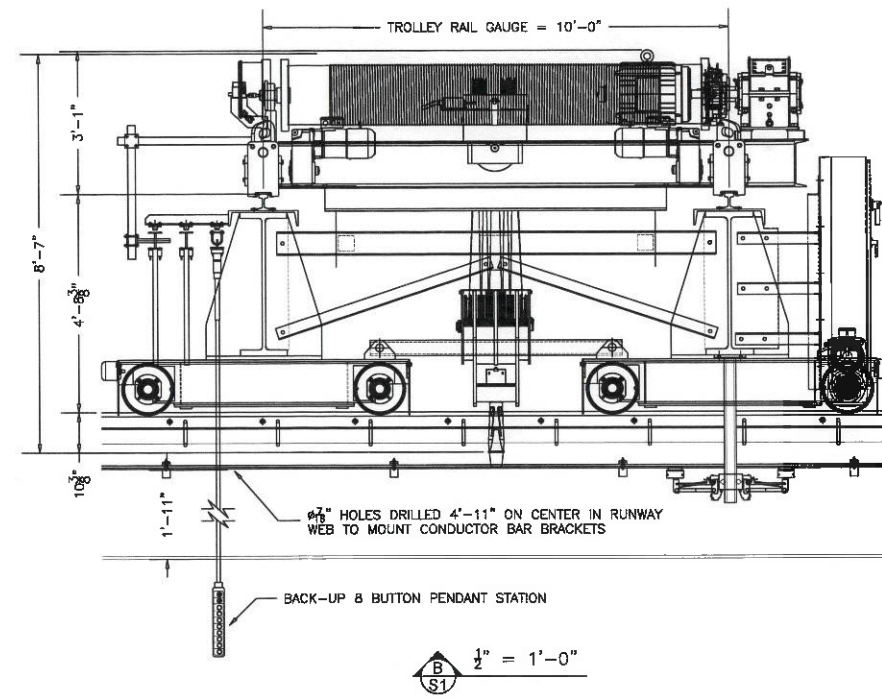


THIS DRAWING IS THE SOLE PROPERTY OF MASS CRANE AND HOIST, AND SHALL BE USED FOR INFORMATIONAL PURPOSES ONLY. ANY COPY OF THIS DRAWING OR THE INFORMATION WITHIN IT IS PROHIBITED FOR SALE OR MANUFACTURING WITHOUT THE WRITTEN CONSENT OF MASS CRANE & HOIST SERVICE, INC.

"AS-BUILT DRAWING"



40 TON CRANE PLAN
3/8" = 1'-0"



TECHNICAL DATA

CAPACITY	40 TON
SPAN	62'-11"
MAX HOOK HEIGHT	15'-11 3/4"
HOIST SPEED	14 FPM FLUX VECTOR
HOIST POWER	40 HP
TROLLEY SPEED	80 FPM VFD
TROLLEY POWER	2 @ 3 HP
BRIDGE SPEED	120 FPM VFD
BRIDGE POWER	2 @ 5 HP
WEIGHT OF TROLLEY	10,500 LBS
WEIGHT OF BRIDGE	43,244 LBS
CRANE GROUP	CMAA "D"
POWER (VERIFY)	460/3/60
CONTROL	115/1/60
PAINT (CRANE)	SAFETY YELLOW

CRANE FEATURES:

- HOISTS EQUIPPED WITH FLUX VECTOR HOIST MOTOR, INVERTER DUTY TROLLEY MOTORS.
- 10,000 HR BEARING LIFE
- MONDEL INDUSTRIAL DUTY THRUSTER SHOE TYPE HOIST BRAKE
- HOIST MOTORS TENV, 60 MIN DUTY WITH CLASS "F" INSULATION
- TROLLEY MOTORS TEFC, 60 MIN DUTY WITH CLASS "F" INSULATION
- GEARED UPPER AND LOWER LIMITS & BACKUP WEIGHTED TYPE UPPER LIMIT
- CRANE EQUIPPED WITH CLOSED LOOP VECTOR CONTROLS & BRAKE FAULT ALARM
- HOISTS EQUIPPED WITH SUMMATION LIMITS PREVENTING A COMBINED PICK EXCEEDING 40 TON
- CRANE EQUIPPED WITH CUSTOM FLEX VUE RADIO REMOTE CONTROL TRANSMITTERS WITH HANDHELD LOAD DISPLAY

NO.	REVISION	DATE	DRAWN BY



PROJECT:
40 Ton Bridge Crane, Two (2) 2 Ton Bridges & One (1) 1-Ton Jib

Brasfield and Gorrie, LLC for Raytheon Astro
19615 Highway 80, Forest, Mississippi 39074

DATE:	27 November 2018
DRAWN BY:	CMD
DESIGNED BY:	MAC
CHECKED BY:	MAC
QC CHECK BY:	

SCALE: AS NOTED
JOB NUMBER: 64959
DRAWING NUMBER: **S2**